

Harbor Dental Enrollment Form

LAST NAME	FIRST	M.I.
STREET ADDRESS		
CITY	STATE	ZIP
SOCIAL SECURITY NUMBER		DATE OF BIRTH
DAY TELEPHONE		EVENING TELEPHONE
SPOUSE'S NAME		DATE OF BIRTH
DEPENDENT - 1		DATE OF BIRTH
DEPENDENT - 2		DATE OF BIRTH
DEPENDENT - 3		DATE OF BIRTH
DEPENDENT - 4		DATE OF BIRTH

Tell us how you heard about Harbor. Enter your special promotional code if applicable.

	Monthly	Annually
<input type="checkbox"/> Member Only:	\$ 3.95	\$ 47.40
<input type="checkbox"/> Member plus 1 dependent:	\$ 5.95	\$ 71.40
<input type="checkbox"/> Member plus 2 or more dependents:	\$ 7.95	\$ 95.40
<input type="checkbox"/> Add Vision, Prescription Drugs and Chiropractic Care:	\$ 3.95	\$ 47.40
There is an annual \$9 processing fee for all monthly payment plans	\$ 9.00	
TOTAL:	\$	\$

Method of Payment

- Check or Money Order (annual payment only)
 MasterCard Visa

CREDIT CARD NUMBER	EXPIRATION DATE
CARD HOLDER NAME	
CARD HOLDER SIGNATURE	
MEMBER SIGNATURE	

By signing, I understand that membership is on an annual basis only. I further agree to allow Harbor Dental Plan to automatically debit my credit card for the full annual payment or on a monthly basis, as I have indicated above, until such time as my enrollment has been cancelled. Personal checks or money orders will also be accepted for the full annual payment, but they cannot be used for the monthly payment option.

Please detach enrollment form and send to:

Harbor Dental Plan
P.O. Box 1550
Bellaire, Texas 77402-1550
1-800-284-0822
www.ComeToTheHarbor.com



Bonus Benefits at No Additional Charge

HEARING AIDS

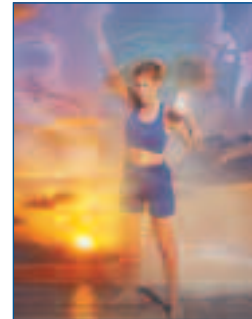
- **Free hearing test and save 15% on the retail cost** of over 70 models of hearing aids at over 1300 provider locations in the U.S. and Canada.
- **Save up to 60%** on over 80 makes and models of hearing aids through the mail order service.

VIP HEALTH & WELLNESS

- Discounted vitamins and nutritional supplements.

DIABETIC SUPPLIES

- Members also receive a 15% discount off retail prices on most diabetic monitoring supplies.



These benefits are NOT Insurance

Special Promotional Code

Contact Your Agent at:

SAVE UP TO 80% ON
QUALITY DENTAL CARE

PLANS START AT
\$3.95 PER MONTH

**HARBOR
DENTAL PLAN**

www.ComeToTheHarbor.com

With Vision
Prescription Drugs
& Chiropractic Care

The Harbor Dental Plan is NOT health insurance. This discount card program contains a 30 day cancellation period. The plan provides discounts at certain health care providers for dental services. The plan does not make payments directly to the providers of dental services. The plan member is obligated to pay for all services rendered but will receive a discount from those providers who have contracted with **Harbor Dental Plan, L.P.** In certain states **Harbor Dental Plan** operates under the license held by Discount Medical Plan Organization: Newbn, Inc. 14240 Proton Rd, Dallas, TX 75244.

Imagine saving up to 80% on over 100 dental procedures!

How is this possible?

We have signed contracts with top-flight dentists, agreeing to send them our Harbor Dental Plan Members in return for them providing generous discounts – a win-win situation for everyone.

How the Plan will take a big bite out of your dental expenses.

Sign up, pay the required fees, and we'll send you a list of approved dentists in your area. Membership is guaranteed and immediate upon receipt of your application and payment.



Then call our patient advocacy operators and they will assist you in making your appointment. When your service is complete you pay only the negotiated

discount fee, which will be anywhere from 10% to 80% off the fees you'd ordinarily pay. The savings can be so significant; some people even find they are less out-of-pocket than they would be with insurance plans. Your dentist can provide you with a fee schedule*.

*Note: Fee schedules vary by geographical areas and are subject to change.

And price savings are just part of the benefits.

- Choose from over 50,000 participating dental providers
- Easy to use
- No limit on savings
- No pre-treatment approvals
- Specialists available
- Savings on braces also available
- Cosmetic dentistry available
- Discounts are immediate

Low monthly membership fees.

There is an annual \$9 processing fee for all monthly payment plans.

	Monthly	Annually
<input type="checkbox"/> Member Only:	\$ 3.95	\$ 47.40
<input type="checkbox"/> Member plus 1 dependent:	\$ 5.95	\$ 71.40
<input type="checkbox"/> Member plus 2 or more dependents:	\$ 7.95	\$ 95.40
<input type="checkbox"/> Add Vision, Prescription Drugs and Chiropractic Care:	\$ 3.95	\$ 47.40

Group Rates Also Available!

Next step – Three ways to enroll.

Pick one of the following and you and your family can begin enjoying significant savings on every visit to the dentist. We look forward to hearing from you, and having another new Member "Come to the Harbor."

1. Detach and fill out the attached application form and mail it back to us with payment.
2. Or – call us and enroll by phone at 1-800-284-0822.
3. Or – go to our Web site at www.ComeToTheHarbor.com and complete the entire process online.

© 2004 Harbor Dental Plan, LP. Harbor Dental Plan is not insurance.

Optional Benefit Package

VISION CARE

PRESCRIPTION EYE GLASSES

- **Save 20% to 60%** on eyewear at over 12,000 optical locations nationwide.
- Most frames, lenses and specialty items are available.

OPHTHALMOLOGY SERVICES

- **Save 10% to 30%** on medical eye exams and surgical procedures including LASIK at select locations.

CONTACT LENSES

- **Save 10% to 40%** on most brands of replacement soft and gas permeable contact lenses including disposables, torics, and bifocals through the mail order service.



PRESCRIPTION DRUGS

NEIGHBORHOOD PHARMACY

- **Save 10% to 50%** on most acute-care medications such as antibiotics and painkillers prescribed to treat short term illnesses or conditions.
- Accepted at over 51,000 chain and independent pharmacies nationwide.

MAIL ORDER PHARMACY

- **Guaranteed lowest prices** on maintenance medications prescribed to treat on-going conditions.
- Save an average of 10% below AARP prices or \$5 below the best retail price quote on brand and generic medications priced over \$10.00.
- No postage or dispensing fees added and the convenience of home delivery.

CHIROPRACTIC CARE

- **Save 50%** on diagnostic services, **and 30%** on treatment and most other services.
- **Free** initial consultation.

THESE BENEFITS ARE NOT INSURANCE